



## Important Dates

---

Feast day of St  
Mary of the Cross  
MacKillop  
Monday 8 August 2022

Assumption of the  
Blessed Virgin Mary  
Monday 15 August 2022

Yr 6 Immersion Day  
- St Joseph's School  
Barnera  
Tuesday 16 August 2022

Catholic Schools  
Open Week - 22 -  
26 August 2022  
Monday 22 August 2022

Yr 6 Immersion Day  
- St Joseph's School  
Renmark  
Tuesday 23 August 2022

Principal's College  
Tour (11am &  
12pm)  
Thursday 25 August 2022

LifeChanger  
Workshop 3: Self  
Friday 26 August 2022

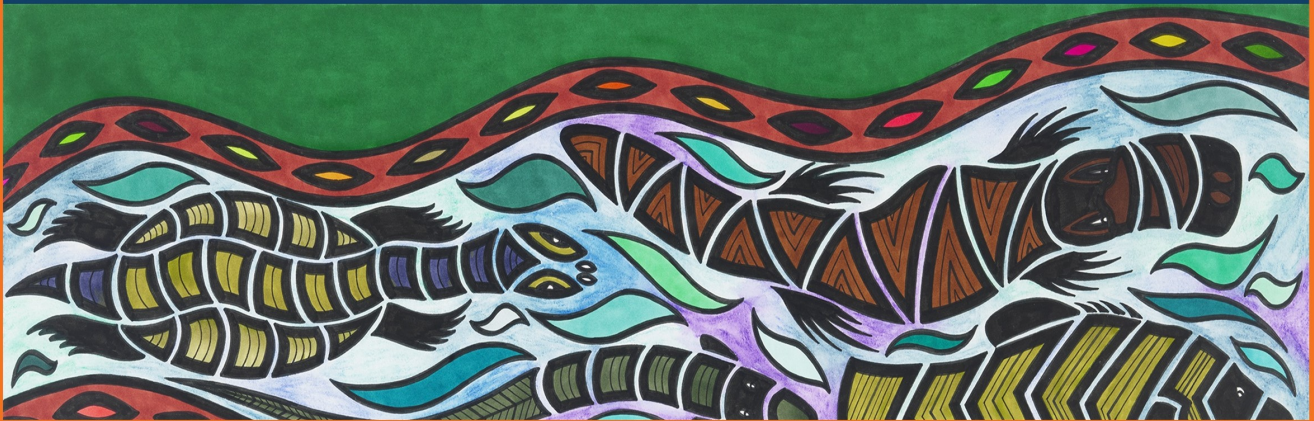
College Board  
Meeting  
Wednesday 31 August 2022

---

**REMEMBER** If you are reading this newsletter from your email don't forget to click 'read more' to expand your view and access all of our feature photos!

## ***Acknowledgement of Country***

We acknowledge that we meet today on Meru Country, and recognise the Erawirung and Ngintait peoples as the Traditional Custodians of this land. We recognise their continuing connection to the earth and waters, and thank them for protecting this land and its ecosystems since time immemorial. We pay our respects to Elders past, present, and emerging and extend that respect to all First Nation peoples present here today.



## From the Principal



### Living Learning Leading Survey

All CESA school communities are currently completing the Living Learning Leading Survey (LLL), with a version of the survey to be completed by all staff, students and the invitation for parents and care givers to complete the survey.

The Living Learning Leading Survey was developed in collaboration with Curtin University to help schools rate participants perceptions of school performance against the Living Learning Leading Standards. An important principle is mutual accountability, involving the shared agenda between the Catholic Education Office (CEO) and Catholic schools have in promoting Catholic identity and striving to create excellent educational outcomes for all students.

### St Francis of Assisi College Wellbeing Model

The College has partnered with the Life Buoyancy Institute, adapting their Impact for Schools Wellbeing framework to inform our whole of school approach to school community wellbeing.

Towards the end of 2021, our Leadership Team participated in a strategic planning process with Dr David Kelly, to develop our draft wellbeing model. As we settle into our first school year, we will continue to engage further with students and families around this model, as it is a whole of community approach to wellbeing.

The model is designed to provide a sustainable and cohesive method to implement an evidence-informed wellbeing culture for the entire St Francis of Assisi College Community.

The St Francis of Assisi Wellbeing Model is a 'contextualised' or 'grass-roots' model of wellbeing. This means:

It has been mapped to the specific local context of the community (including students, families, Catholic values, and ethos), and by doing so, it draws upon the wisdom, strengths and needs of the local community and the Riverland region of South Australia.

The model has been developed in response the following key contextual factors:

- Catholic ethos and values
- Multiple community members
- Diverse needs
- Community and social context
- Science of building wellbeing responsive communities
- Science of wellbeing

## Laudato Si' Action Plan

The College Motto of Laudato Si', underpins all we do as a school community, and a simple way to view this, is care for self, care for others, and care for our common home. This incorporates the social economy, financial economy, and ecological economy.

To support a planned, and strategic approach to embedding this, we are using the ASSISI Model as an overarching framework to inform our approach.

The ASSISI Model, designed by Catholic Earthcare is:

A Strategic Systems-based Integrated Sustainability Initiative to assist schools on the ecological conversion journey.

What does a Strategic Systems-Based Integrated Sustainability Initiative (ASSISI) mean?

The work is linked to the strategic intent of our College, thereby overcoming a potential ad hoc and fragmented approach to sustainability.

The whole school and the broader community of which it forms a part is involved. ASSISI seeks to integrate all aspects of school life, for example, school activity, planning and management, resources, grounds and building management, community networks, learning processes, and the religious dimension.

This process will continue to be communicated across our school community, including engagement with key stakeholders at key points in the planning process.

## Enrolments 2023

I advise parents and caregivers that interviews have well and truly begun for 2023 Year 7, 8 and 9 Enrolments. Please contact Claire Smith to arrange an Enrolment Conversation.



## COVID-19 Provision Of Rapid Antigen Tests to Support Future Possible Testing Of Classroom Contacts

Next week your child will bring home two Rapid Antigen Tests (RATs) for you to store at home in case of a potential outbreak of COVID-19 at school. Please rest assured that this is a precaution and not an indication of any immediate concerns within the College community. SA Health defines an outbreak in an educational setting as five or more COVID-19 positive students in a home class/room across a seven-day period. In the event that there is an outbreak in your child's home class/room, you will be notified that your child is a classroom contact and if they are asymptomatic, they are recommended to utilise one of the provided RATs prior to returning to school. This approach takes into account the updated advice provided by SA Health to educational settings. Note that all students in our school will be provided with two RATs to store at home.

If you have any queries in relation to this correspondence, please contact Nathan Hayes via the Administration Office on 8595 4500.

**Nathan Hayes, Principal**



## Religious Identity and Mission



### The Assumption

Monday 15 August is the Solemnity of the Assumption of the Blessed Virgin Mary and is a Holy Day of Obligation. The Feast of the Assumption commemorates Mary's entrance into Heaven, body, and soul. Mary is a special symbol for Catholics, reinforcing our confidence that death is not an end. In her assumption Mary is a wonderful sign of hope for us, because after her Son, she is the first to be assumed body and soul into heaven. Just as Mary's Immaculate Conception is a symbol of what God is doing for all people, her Assumption is also a symbol of what will happen to all people in the 'ages to come' when everyone who has died will be given a new and different kind of life. So, the Assumption is a feast of profound hope; a hope that inspires all we do as a Christian community, because, as reiterated by Saint John Vianney, "Jesus on the Cross said to the disciple whom He loved: "Behold your Mother!"

The feast of the Assumption is for all Catholics. Its meaning has been caught in a later feast instituted by Pope Francis for a more inclusive Church, Mary Mother of the Church. It focuses on Mary's links to us as well as to God, and points to the links that unite all Christians and all Churches. The Feast of the Assumption enlivens our hope that we shall be with Christ as Mary now is.

### Feast of St Mary of the Cross MacKillop

"Never see a need without doing something about it."

Monday 8 August was the feast day of St Mary of the Cross MacKillop, Australia's first saint. We send special love and greetings to all the Josephite sisters, who carry on Mary's work in Australia, New Zealand, and our world today.

St Mary MacKillop, intercede for the needs of our local communities, remember all who are suffering from drought, sickness, poverty, abuse, homelessness, or any kind of need and, as always, bless the children.

Dear Mary, pray for us all and lead us to God.

Amen.

**Nathan Hayes, Principal**

## Leader of Learning

### Peer Observation

This term, all teachers will be taking part in peer observation. The process of peer observation will provide an environment where collaboration and continuous development among teachers is encouraged and supported. Peer observation will enable teachers to focus on an aspect of high-quality teaching. This will build their teaching capabilities and empower staff to continue to develop. The process will

also enable teachers to observe other teachers therefore promoting collaboration and learning from each other. This will improve not only teaching performance, but will ultimately impact student learning, leading to an increase in student achievement and learning outcomes.

## Nationally Consistent Collection of Data on School Students with Disability (NCCD)

Every year, all schools in Australia participate in the Nationally Consistent Collection of Data on School Students with Disability (NCCD). The NCCD process requires schools to identify information already available in the school about supports provided to students with disability. These relate to legislative requirements under the Disability Discrimination Act 1992 and the Disability Standards for Education 2005, in line with the NCCD guidelines (2019).

The NCCD provides state and federal governments with the information they need to plan more broadly for the support of students with disability.

Further information about the NCCD can be found on the NCCD Portal (<https://www.nccd.edu.au>).

If you have any questions about the NCCD, please contact the school.

**Natalie Meuret, Leader of Learning**

## College Community Wellbeing

Congratulations to our new student leaders for Semester 2. On Friday, they were inducted and blessed into their positions by Father Paul and the outgoing student leaders at the College

<i>AQUA</i>	<i>IGNIS</i>	<i>TERRA</i>	<i>VENTUS</i>
Kaelen Greenhalgh	Blossom Kimberley	Aleesha Crosby	Alissa Yard
Quinn Taylor	Imogen Lyons	Noah Burgess	Yvette Kroon







## Student Action Groups

Students are encouraged and invited to join one of our two Action Groups. Please contact the relevant students on the below flyers to register your interest.



**LAUDATO SI ACTION GROUP**

**Do you love the environment around the Murray river?**

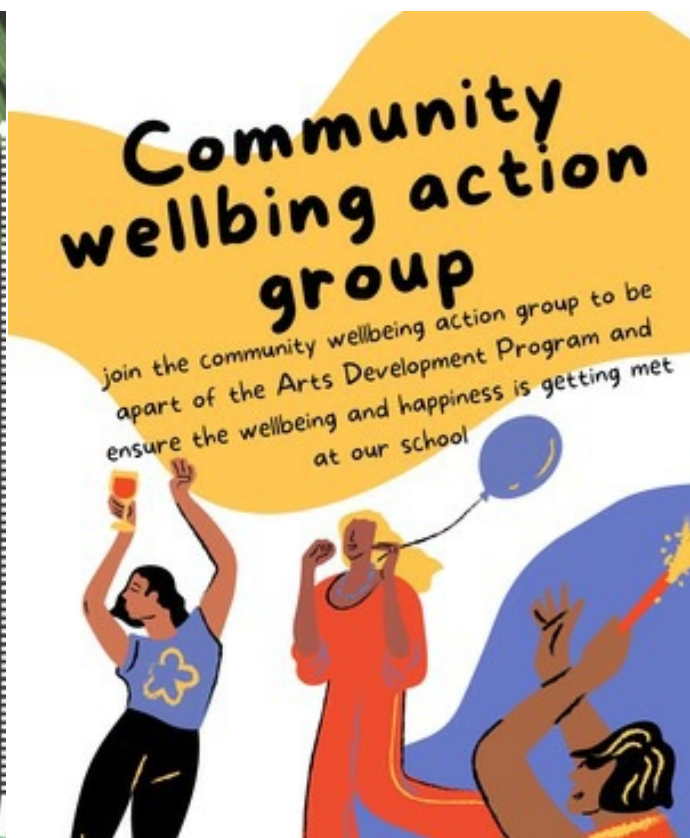
Join the group today if you are interested by contacting any of the below emails or talk to someone at school

Samuel.DePalma@assisi.catholic.edu.au  
Alissa.Yard@assisi.catholic.edu.au  
Sophie.Robertson@assisi.catholic.edu.au  
Luke.Cotter@assisi.catholic.edu.au

Meetings every Wednesday at recess

LOOK AFTER THE ENVIRONMENT

The flyer features a dark background with green and white triangular bunting at the top left and a white flower with green leaves at the top right. At the bottom, there is a photograph of a brown kangaroo.



**Community wellbeing action group**

join the community wellbeing action group to be apart of the Arts Development Program and ensure the wellbeing and happiness is getting met at our school

The flyer has a bright yellow background. It features an illustration of three people: a woman in a blue shirt holding a glass, a woman in a red dress holding a blue balloon, and a person in a red shirt holding a lit sparkler. The text is written in a casual, hand-drawn style.



# St Albert's Immersion Day



In Term 3, all Year 6 students enrolled in a Riverland Catholic primary school will visit the College for their second Immersion Day. In Week 2 and 3, we welcomed students from OLOR, St Albert's and local government schools to engage in PE, Woodwork and STEM lessons. We welcome Year 6 students from St Joseph's Barmera next Tuesday.

If your child is enrolled at a non-Catholic school, please contact the College on (08) 8585 4500 or via email [info@assisi.catholic.edu.au](mailto:info@assisi.catholic.edu.au) to register for one of our final two sessions!

<b>School</b>	<b>Term 3 Dates</b>
<i>St Joseph's Barmera</i>	Tuesday August 16 <sup>th</sup>
<i>St Joseph's Renmark</i>	Tuesday August 23 <sup>rd</sup>

*"It's not enough to be against something. You have to be for something better"* - Tony Stark  
**Luke Cotter, Leader of Wellbeing**



## Food Technology Yr 7

'Food Technology at SFoA! Our Year 7 students have started their pleasurable food education journey with Mrs Burgess. The focus is for students to understand and practice food safety and hygiene along with gaining confidence in cooking delicious food for themselves. So far we have made Mini Pizza Muffins and Pikelets! Students will have an upcoming assessment that focuses on a smart snack suitable for a lunchbox. The wonderful kitchen facilities provide great opportunities for students to learn first hand vital life-skills enabling them to be independent and successful while at school and beyond!



## Year 8 Sewing Class



Year 8 students have been learning the basics of hand-sewing in our Creative Textiles class. With their newly found skills, students are in the process of making a Softie that they will incorporate into a Childrens story or puppet show. The plan is to showcase this work to the Reception Children at St Joseph's in Renmark. Students have been really enjoying these classes and have been extremely focused on their projects. Watch this space for the final results!

## \$20 Boss



This term the Year 8s are studying Business and Economics in HASS. They are participating in a program called \$20 Boss, which is designed to help the students build their enterprise and financial literacy skills to become globally minded citizens, as well as helping them develop confidence, communication, collaboration, risk-taking and resilience.

The students are working to identify a problem in the market and formulating a solution where they can then build, design and deliver a business of their own with real money and real consequences.

We have asked some local business owners to come and speak to the Year 8s over the next few weeks about starting up and owning their own business and talk about the ins and out of managing a small business.

This week we had Hayley from Zynsky Bakes, who discussed her journey and how she uses Instagram to help promote her business. The students were excited to learn first hand from a small business owner and asked some great questions to help guide their own decisions.



## Recognition of Student Achievement



All of us here at St Francis congratulate Riley Halupka, Ethan Thomas, and Mitchell Ebert (pictured above) on their selection in the Riverland Baseball team competing at the SA Country Championships in October. Riley has been selected as first pitcher and is the captain of the squad. Good luck boys!



## Ergo Challenge



We are holding a Short Course Ergo Rowing Competition at lunch times during Weeks 6 & 7 of this term. This competition is open to everyone. Distance of this one will be 500m - so should take 2-3 minutes each. We have a separate competition for both year 7 and 8 boys and girls consisting of a 1st Round, Quarter Finals, Semis and a Grand Final. Race days will be on normal PE days. Students can register by adding your name to the list located outside the Teachers Office.

We will hold a long course competition (1,000m) later on in the year - so look out for that one too!! We encourage everyone to have a good go, give it your best effort & see how much you can improve over time.

## Catholic Schools Open Week from August 22-28.



**CATHOLIC  
SCHOOLS  
OPEN WEEK**  
**AUGUST 22-28**



It's Catholic Schools Open Week from August 22-28.

Choosing a school is one of the most important decisions that a parent makes.

This Catholic Schools Open Week, we are hosting a Principal's College Tours on at 11am and 12pm on Thursday 25 August 2022. This is an opportunity for families to see our school in action and discover the benefits of a Catholic education here at St Francis of Assisi College.

Register for our Tours [here](#)

Please feel free to invite friends or family members who might be interested in learning how a Catholic education can set their child up for life.

Tours can easily be arranged outside of our guided tour times, please feel free to contact us to arrange a time.

# Family Business Directory

St Francis of Assisi College is establishing a Family Business Directory and inviting families to be part of the Directory.

The Family Business Directory is an opportunity for families who run businesses to promote their business through our College community, via our College webpage and Facebook page.

The Family Business Directory is also an opportunity for members of the College community to consider supporting businesses from the Directory when making their purchasing decisions.

The Family Business Directory is free of charge for current families of the College.

To be included, send the following information to [inf@assisi.catholic.edu.au](mailto:inf@assisi.catholic.edu.au)

**Family Surname** (not for publishing):

**Business Name:** Sample Family Business

**Business Phone Number:** 1800 SAMPLE

**Business Email Address:** [sample@familybusiness.com.au](mailto:sample@familybusiness.com.au)

**Business Website:** [www.sample.com.au](http://www.sample.com.au)

And your business logo or photo (small file size is fine).

We look forward to seeing many College families' businesses get involved!

## Child Safe Policies

St Francis of Assisi College adheres to Catholic Education SA policies in relation to Child Safety. These policies are available on our College website and can also be accessed via links below.

[Catholic Diocese of Port Pirie Child Safeguarding Policy](#)

[Responding to Online Safety Incidents in SA Schools: Guidelines for staff working in education settings](#)

[Keeping Safe: Child Protection Curriculum information for educators](#)

[Reporting Harm of Children and Young People Procedure](#)



# Riverland Youth Theatre's TERM 3 CLASSES

RIVERLAND  
YOUTH THEATRE

DAY	CLASS	TOWN	AGE	TIME	COST
Monday	<u>Preschool:</u> <u>Music and Movement</u>	REMARK	0-5-year-olds	9:00am- 9:45am	Gold coin
Monday	<u>Treetops and Towers:</u> <u>A Minecraft Project</u>	ONLINE	10-14-year-olds	5:00pm- 6:30pm	FREE
Monday	<u>2nd Delvers:</u> <u>Dungeons &amp; Dragons</u>	REMARK	10-14-year-olds	4:15pm- 6:30pm	\$88
Tuesday	<u>Teen Ensemble:</u> <u>'Death Match'</u>	LOXTON	13-17-year-olds	4:30pm- 6:30pm	\$100
Tuesday	<u>Paint and Draw</u>	REMARK	7-10-year-olds	4.30pm- 5.30pm	\$75
Wednesday	<u>1st Delvers:</u> <u>Dungeons &amp; Dragons</u>	BARMERA	10-14-year-olds	4:15pm- 6:30pm	\$88
Wednesday	<u>The Big Kids</u>	REMARK	16-100-years-old	7:30pm- 9:00pm	\$15 per session
Thursday	<u>Tween Ensemble</u>	REMARK	10-12-year-olds	3:30pm- 5:00pm	\$75
Thursday 2nd rehearsal added in Sept	<u>Treetops and Towers:</u> <u>A Minecraft Project</u>	ONLINE	10-14-year-olds	5:00pm- 6:30pm	FREE
Friday	<u>T(w)een Ensemble:</u>	WAIKERIE	9-14-year-olds	4:30pm- 6:00pm	\$75
Every 2nd Saturday	<u>Carnival of the</u> <u>Animals: Movement</u> <u>and Stories</u>	REMARK	4-6-year-olds	10:00am- 10:45am	\$75
Every 2nd Saturday	<u>Carnival of the</u> <u>Animals: Movement</u> <u>and Stories</u>	REMARK	7-9-year-olds	11:00am- 12:00pm	\$75
Every 2nd Sunday	<u>Pondi: Aboriginal Youth</u> <u>Connection</u>	REMARK	8-15-years-old	4:00pm- 6:00pm	FREE

**CARCLEW**



BOOKINGS FROM JULY 21ST:

[HTTPS://RYT.WUFOO.COM/FORMS/TERM-3-AT-RYT/](https://ryt.wufoo.com/forms/term-3-at-ryt/)



[HTTPS://RYT.ORG.AU](https://ryt.org.au)

( 08 ) 8586 3437



## SOUTH AUSTRALIAN GEOGRAPHY PHOTO COMPETITION 2022

Open to students  
in Years 7-9



### Prize

- \$100 for winning entry
- Shortlisted photos to be displayed in exhibition at State Library of South Australia

### About the competition

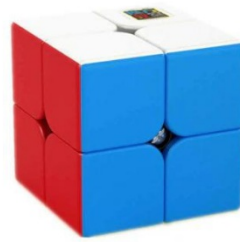
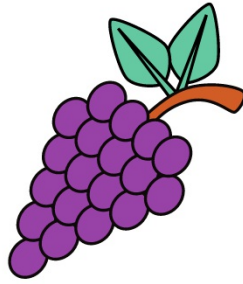
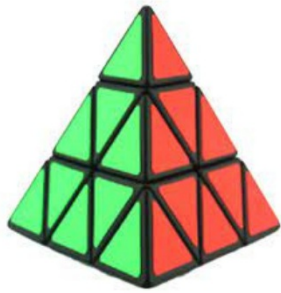
- Theme: 'South Australia: A Liveable State'.
- Explore your local area and capture its liveability.
- Judging criteria: originality, relevance and composition.

### How to enter

- Pick **one** photo you took and write a caption (100 words max.) to describe how it represents the place as liveable.
- Schools each nominate and put forward their 5 best student entries.

**Competition open until 16th September 2022**





# CLARE VALLEY CUBING

**Be part of the very FIRST regional  
cubing competition in SA!**

**St. Joseph's School, Clare**  
**in the Gymnasium**

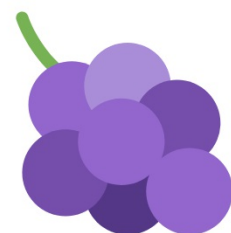
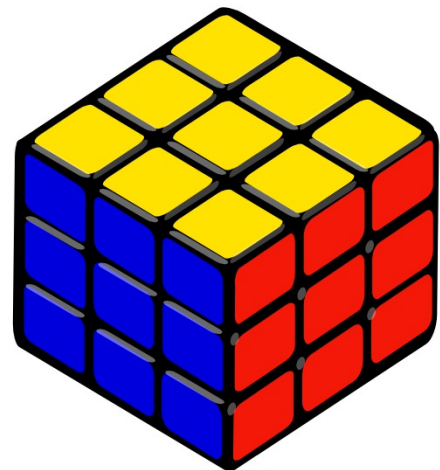
**Sunday 21st August, 2022**

**Events: 3x3, 2x2, 4x4,  
5x5, 3x3 One-Handed  
& Skewb**

Come, visit and explore the 'Clare Valley'  
for this event. Limited number of places  
available - 75max.

Canteen available on the day

Search and **Register** for the event at:  
[www.worldcubeassociation.org/competitions](http://www.worldcubeassociation.org/competitions)  
Registration (\$20) opens Friday 3rd June.



The Clare Valley will soon host the very 1st Rubik Cubing event in regional SA, run by the WCA - the World Cubing Association! This event has been organised by local students. Students can be any age and any ability to compete.

All Content Copyright 2024 ©